

# Transfer files to/from Curnagl

How do I transfer my code to Curnagl? How do I get my results back on my computer?

There are two main options to transfer data to/from Curnagl:

1. You are familiar with terminal/bash command lines: use the `scp` command, see below.
2. You are used to work with graphic interfaces: use FileZilla, see below.

First option: `scp` command

```
scp <FILE_TO_COPY> <FOLDER_WHERE_YOU_PASTE_IT>
```

```
scp -r <FOLDER_TO_COPY> <FOLDER_WHERE_YOU_PASTE_IT>
```

The latter command refers to a folder transfer. To transfer a folder, add the recursive command `-r` after `scp`.

## From your own computer to the cluster.

Never better than an example to understand this command. Suppose you have a file (of any type you want!) called `tutorial` on your own computer. Here are the steps to copy this file to Curnagl cluster:

1. Depending on your distribution.

LINUX: open a terminal in the folder where is the file `tutorial`, or open a terminal and then use `cd` command to go to the right place.

MAC: type `terminal` in the search field, choose `terminal`, then use `cd` command to go to the right place.

WINDOWS: type `cmd` in the menu, choose `Command prompt` or `Powershell`, then use `cd` command to go to the right place.

2. Open a second terminal. Connect to Curnagl with the `ssh` command you are used to.

**This step is not mandatory but it allows you to get the path where you want to paste `tutorial`.**  
**One tip:** in case the path where you want to paste `tutorial` is very long (e.g. `/users/<username>/<project>/<sub_project>/<sub_sub_project>/<sub_sub_sub_project>`) or simply to avoid mistakes when writing the path: use `pwd` command in the right folder on this second terminal connected to Curnagl, copy the whole path and paste it to the end of the `scp` command (see below).

You now have two open terminals: one where you are on your own computer and one where you are connected to Curnagl. Suppose you want to copy/paste `tutorial` to `/users/<username>/<project>` on Curnagl, where `<username>` is your username and `<project>` is the folder where you want to paste `tutorial`.

3. On the terminal from step 1 (which can access `tutorial` file since you are supposed to be in the right folder), type the following command (it will ask for your password):

```
scp tutorial <username>@curnagl.dcsr.unil.ch:/users/<username>/<project>
```

You can check either the copy/paste performed well or not: use `ls` command on Curnagl and check either if `tutorial` file is there or not.

### From the cluster to your own computer.

Only step 3 changes:

```
scp <username>@curnagl.dcsr.unil.ch:/users/<username>/<project>/tutorial .
```

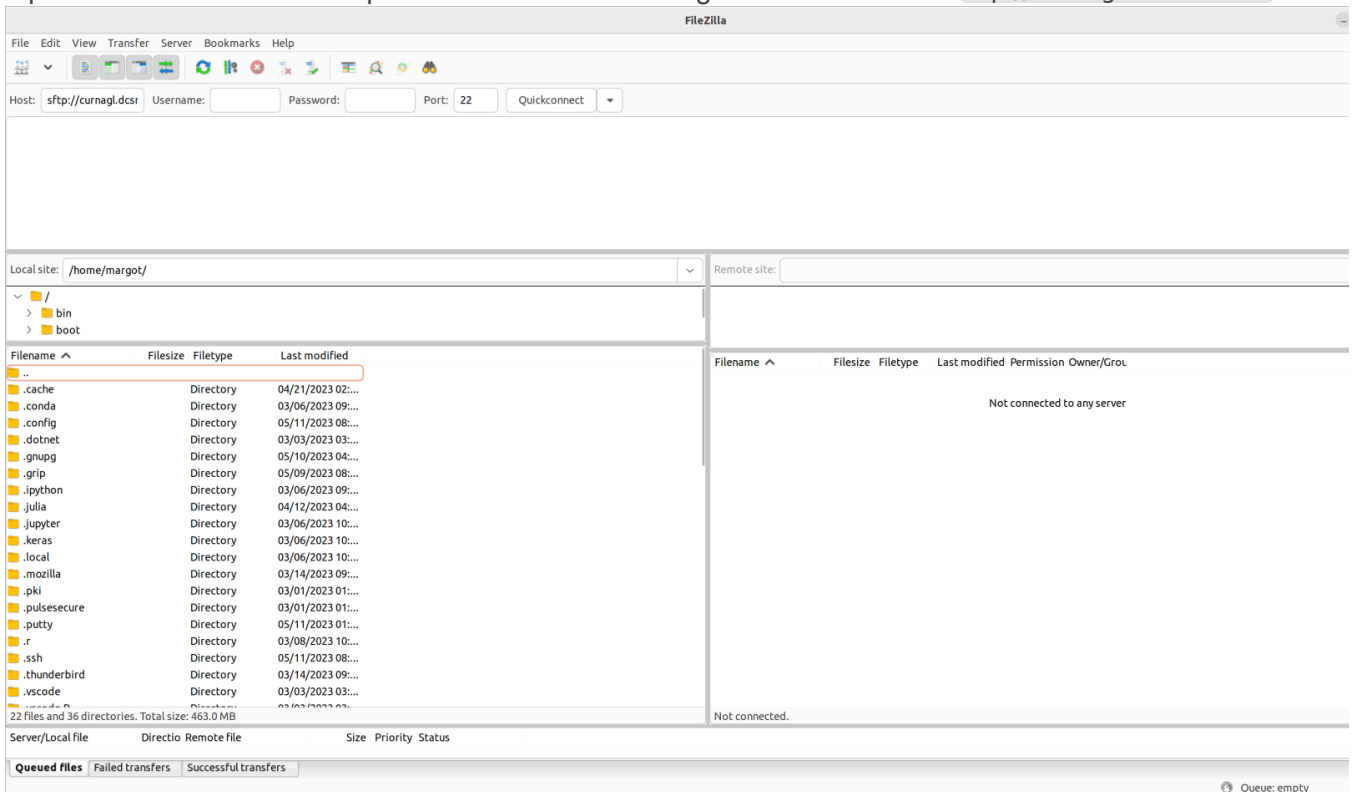
In case you do not want to paste it in the current folder (that is for what `.` stands for at the end of the above command line), simply replace `.` with the correct path.

## Second option: FileZilla

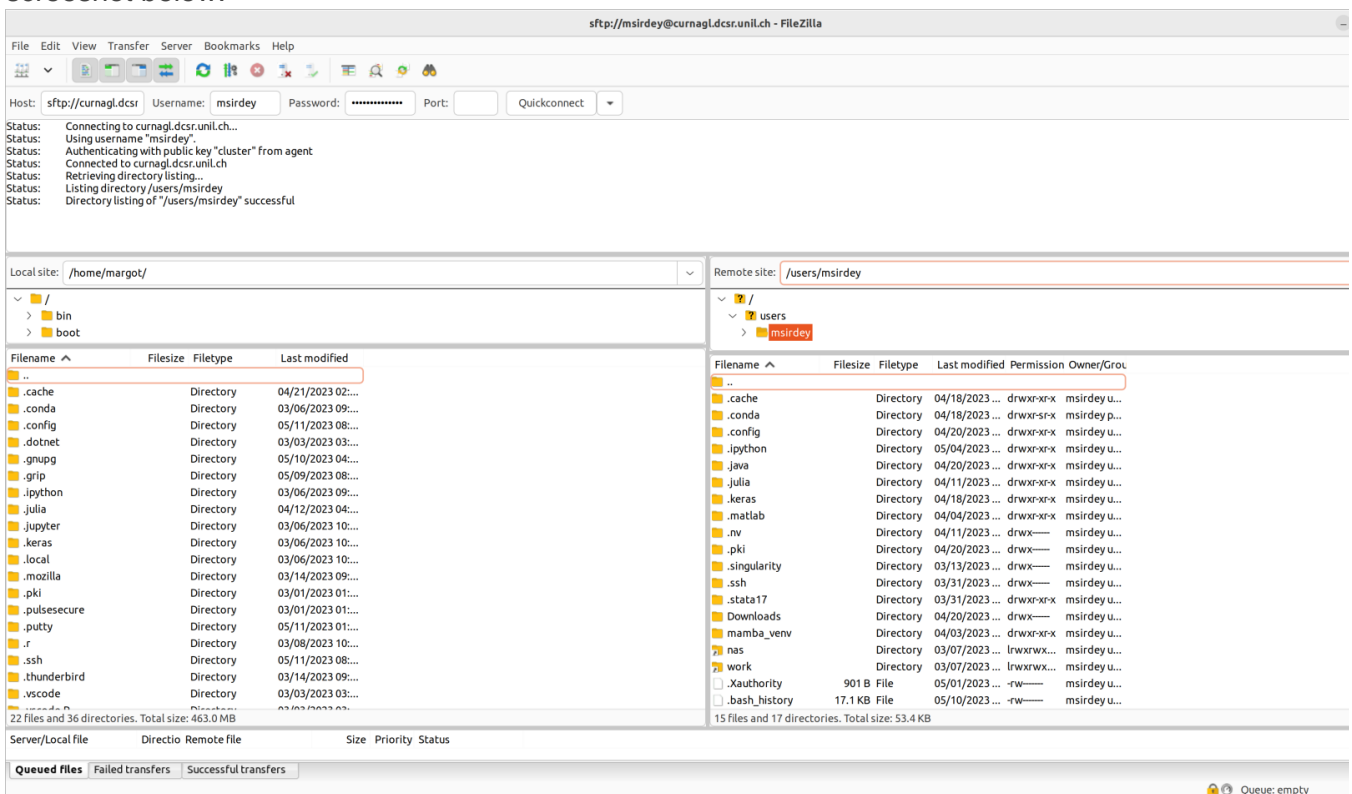
First, you must install FileZilla on your computer. Please refer to: <https://filezilla-project.org/> (install client version, more documentation on [https://wiki.filezilla-project.org/Client\\_Installation](https://wiki.filezilla-project.org/Client_Installation)).

Here are the steps to transfer data to/from Curnagl with FileZilla.

1. Open FileZilla. Perform a quick connection to Curnagl. Fill in `Host` with: `sftp://curnagl.dcsr.unil.ch`



2. Then fill in `Username`, `Password`, and `Port` with 22. Click on `Quickconnect`. Refer to the screenshot below.



3. You now have the remote site window on the right.
  1. **To transfer data to Curnagl:** click and move file/folder from the left window (local site) to the right window (remote site).
  2. **Inversely, to transfer data from Curnagl:** click and move file/folder from the right window (remote) to the left window (local site).

Instead of `/home/margot/` on the left local site (respectively `/users/msirdey/` on the right remote site), you should see your own path on your computer (respectively on Curnagl).

FileZilla keeps remote sites in memory. For future transfers, click on the arrow on the right of `Quickconnect` and choose `sftp://curnagl.dcsr.unil.ch`.

---

Révision #5

Créé 15 mai 2023 07:17:47 par Margot Sirdey

Mis à jour 23 mai 2023 16:02:30 par Margot Sirdey