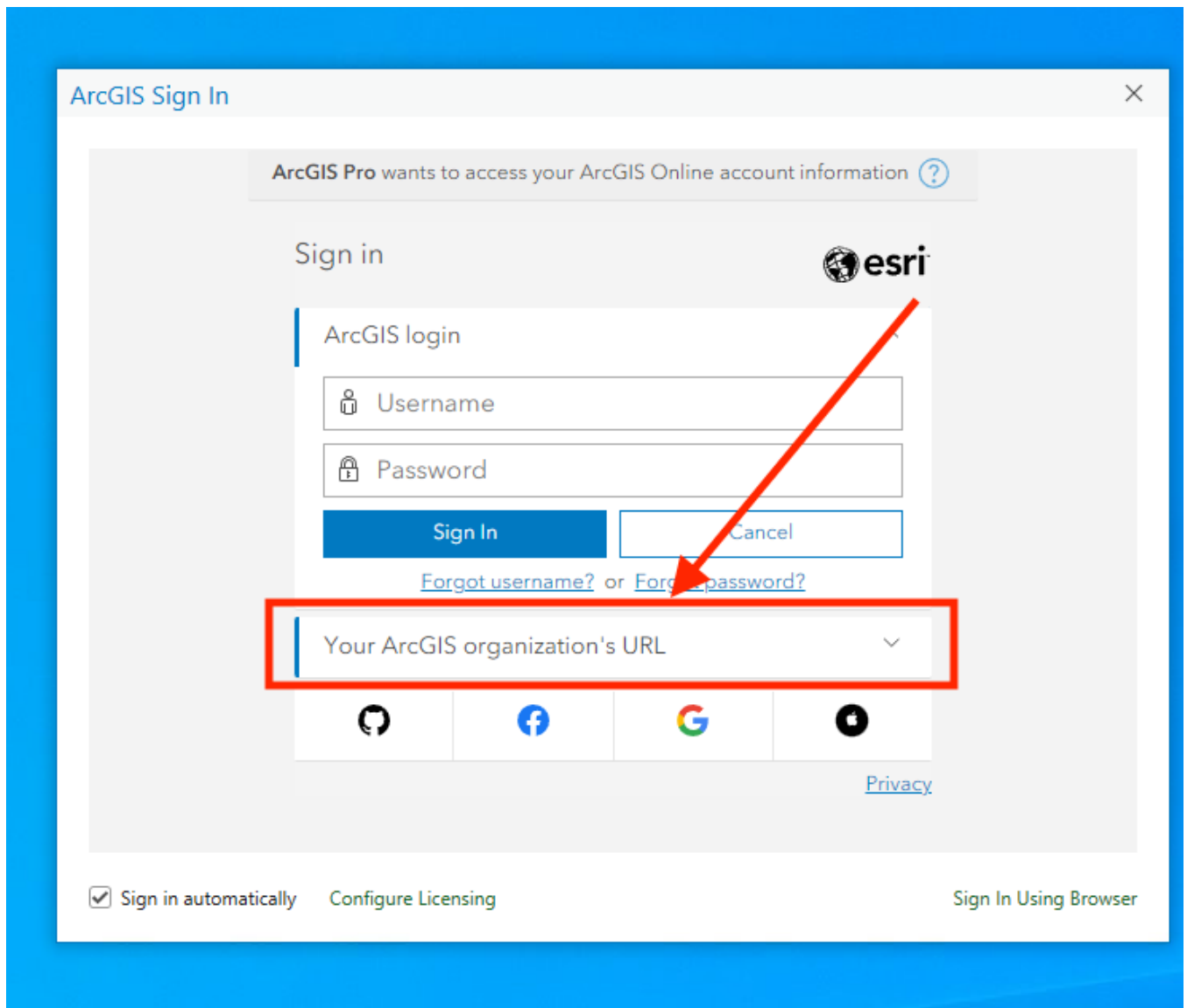


Utilisation d'ArcGIS

Activer sa licence personnelle

1. Cliquer sur "Your ArcGIS organization's URL"




2. Compléter l'URL en ajoutant "unil" => unil.maps.arcgis.com

ArcGIS Sign In

ArcGIS Pro wants to access your ArcGIS Online account information ?

Sign in



ArcGIS login


Your ArcGIS organization's URL


unil


.maps.arcgis.com


☒ Remember this URL

Continue









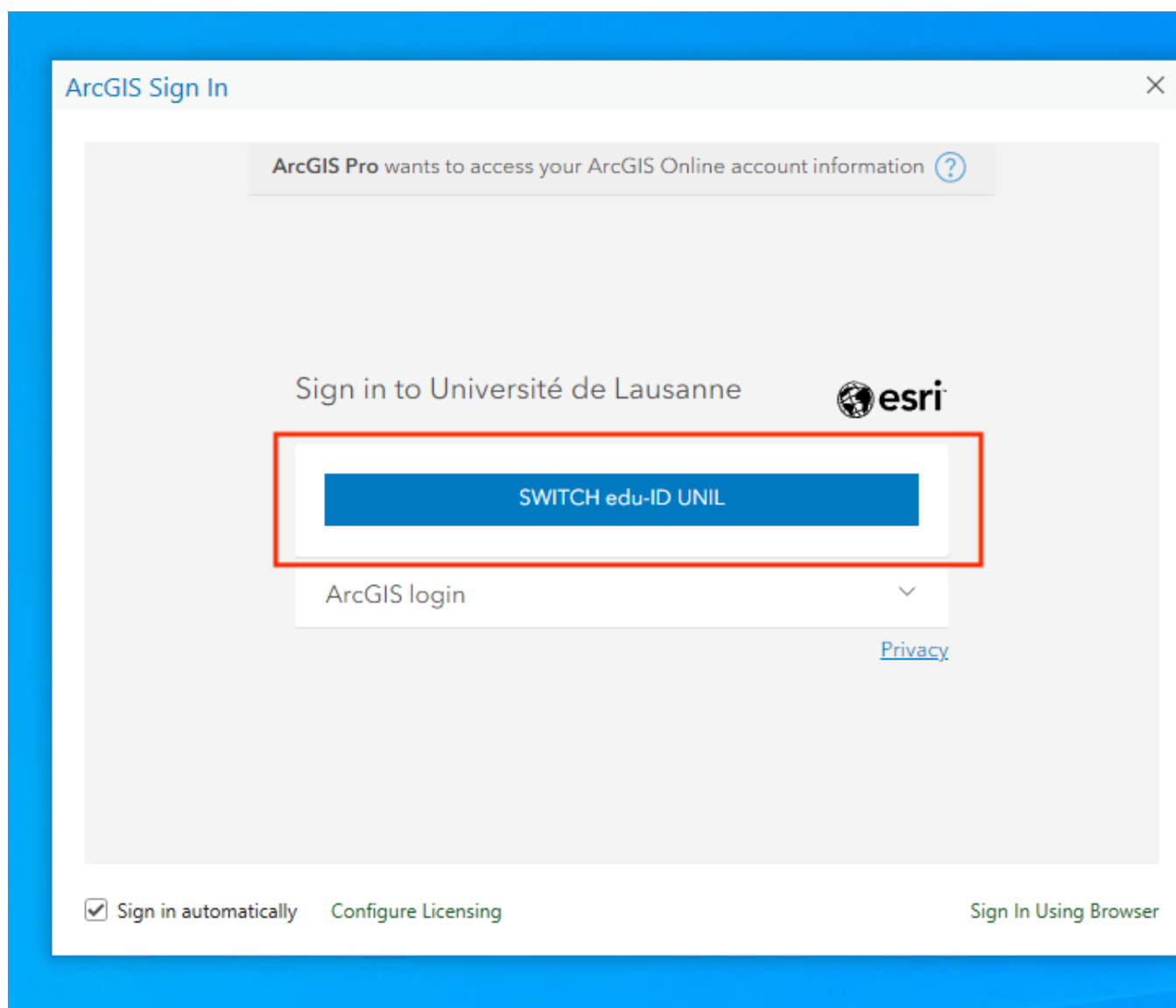
[Privacy](#)

☒ Sign in automatically

[Configure Licensing](#)

Sign In Using Browser

3. Cliquer sur Switch edu-ID UNIL et s'authentifier avec son compte edu-ID



4. La licence est alors attribuée.

Révision #1

Créé 15 septembre 2023 12:40:00 par François Bavaud

Mis à jour 15 septembre 2023 12:40:43 par François Bavaud