

Installation

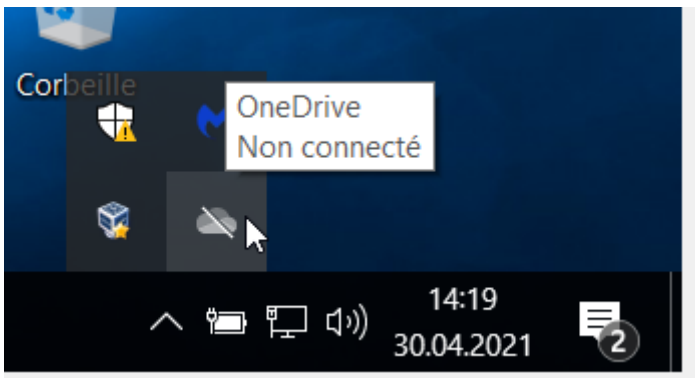
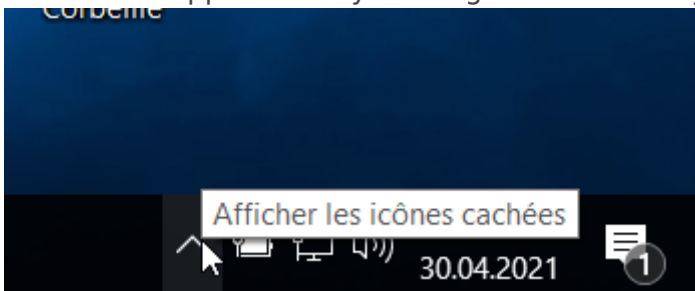
Windows 10 and 11

Installation:

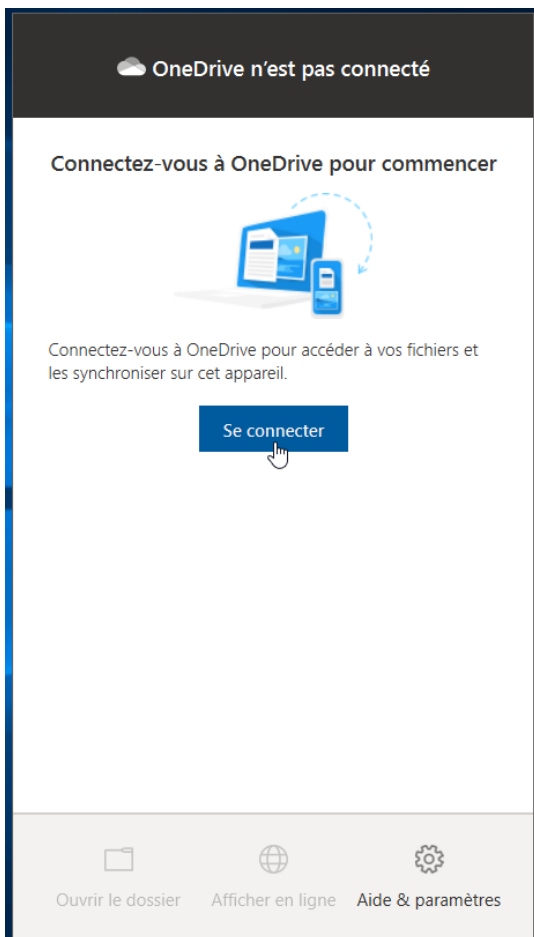
On Windows 10 and Windows 11, OneDrive is usually installed by default. If you can't find it, you can download the application here: <https://www.microsoft.com/en-us/microsoft-365/onedrive/download>.

Configuration:

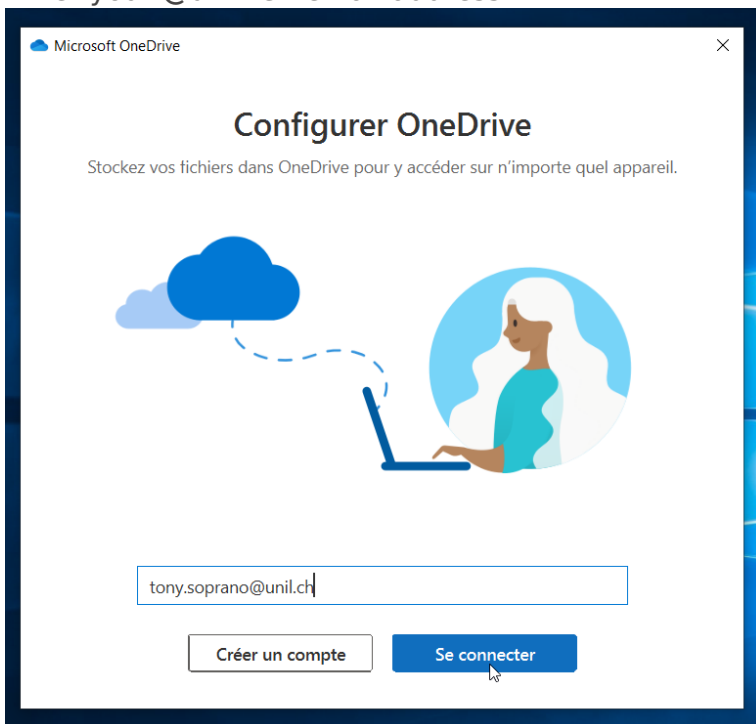
1. Launch the application by clicking on the icon in your taskbar



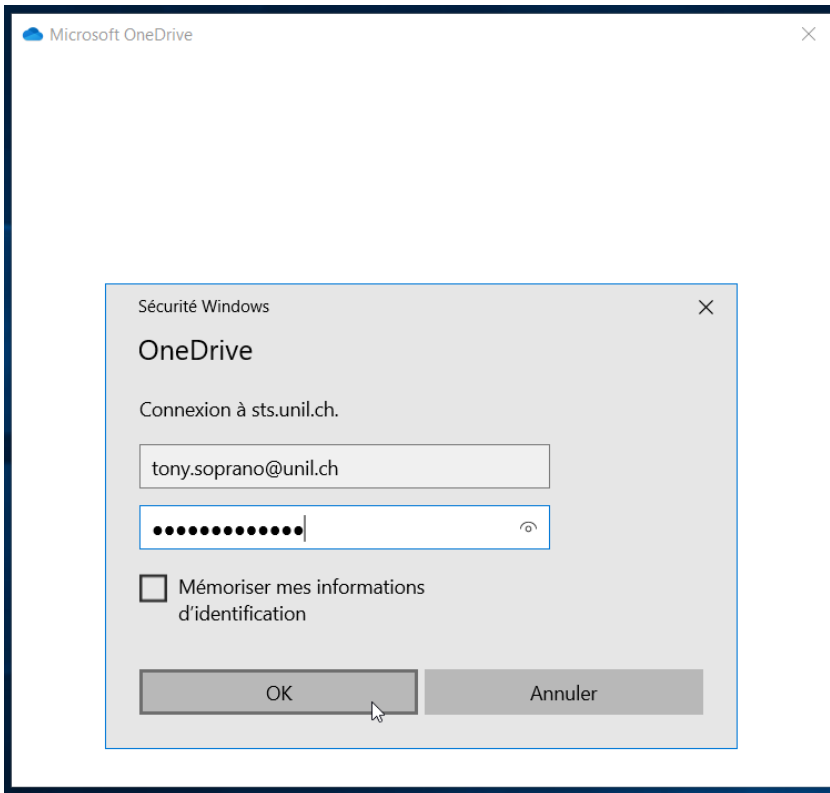
2. Click on the **Sign In** button



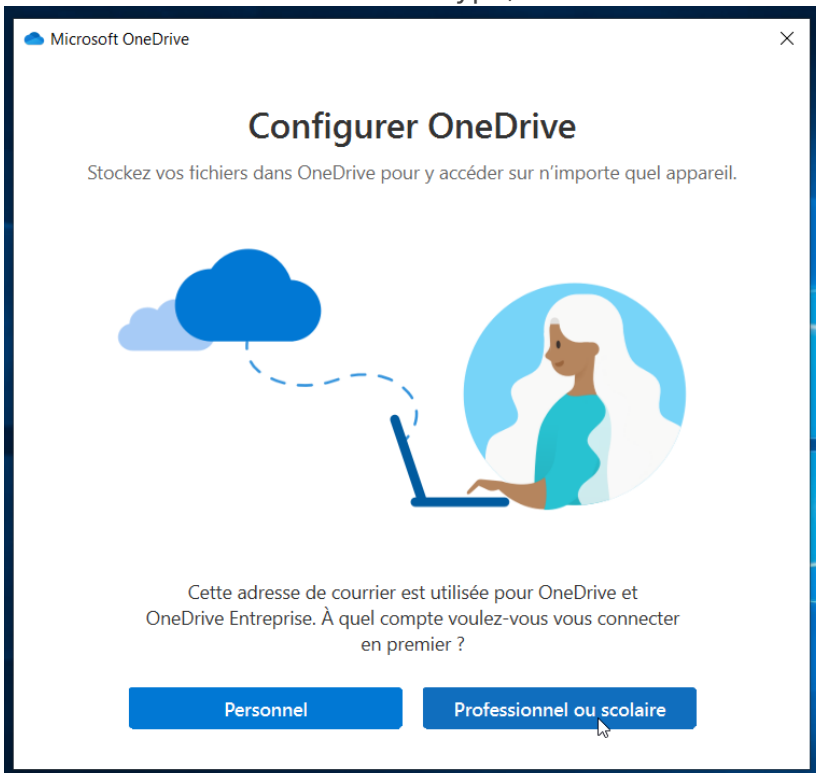
3. Enter your **@unil.ch** email address.



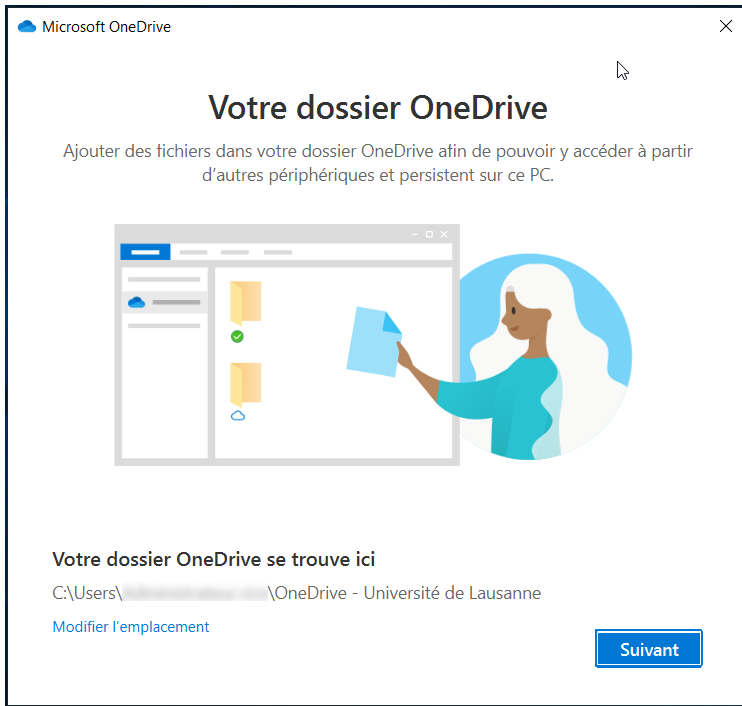
4. On the page that opens, enter your UNIL credentials (email address **@unil.ch** and UNIL password).



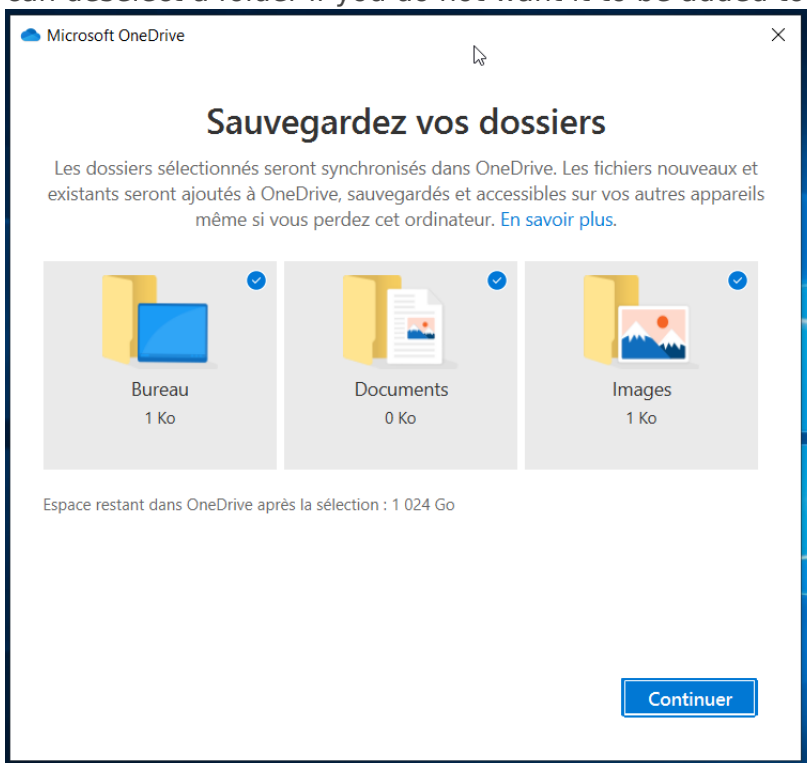
5. If asked to choose the account type, select **Work or school**.



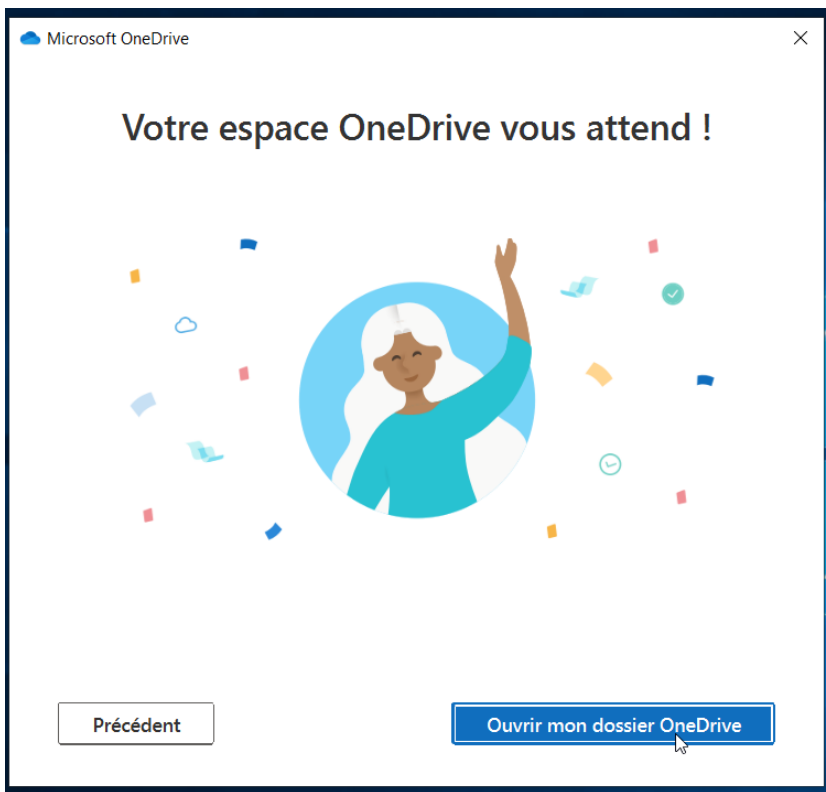
6. By default, OneDrive syncs a *OneDrive-Université de Lausanne* folder in your user folder. You can modify it if you wish. **Never sync an entire user folder or a folder from another synchronization application (SWITCHdrive, Dropbox, etc.).**



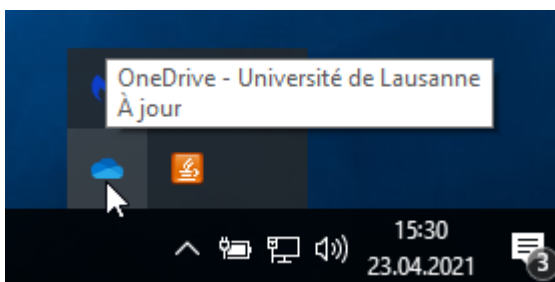
7. By default, the folders **Desktop**, **Documents**, and **Pictures** are synced to OneDrive. You can deselect a folder if you do not want it to be added to OneDrive. Then click **Continue**.



8. Several explanation screens will appear. Skip them by clicking **Next**.
9. The final screen allows you to open your synchronization folder and start depositing files. If you chose to sync the Desktop, Documents, and/or Pictures folders, the data loading will start immediately.



10. You can check that your account is configured correctly if the OneDrive icon in the taskbar turns blue.

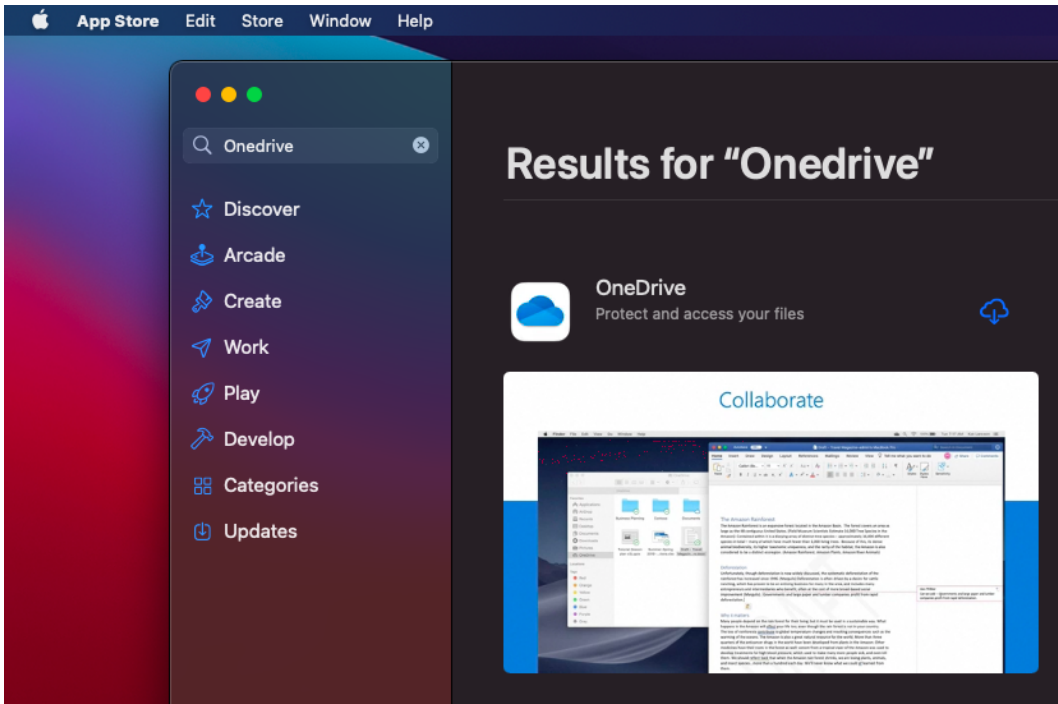


macOS

Method 1: App Store

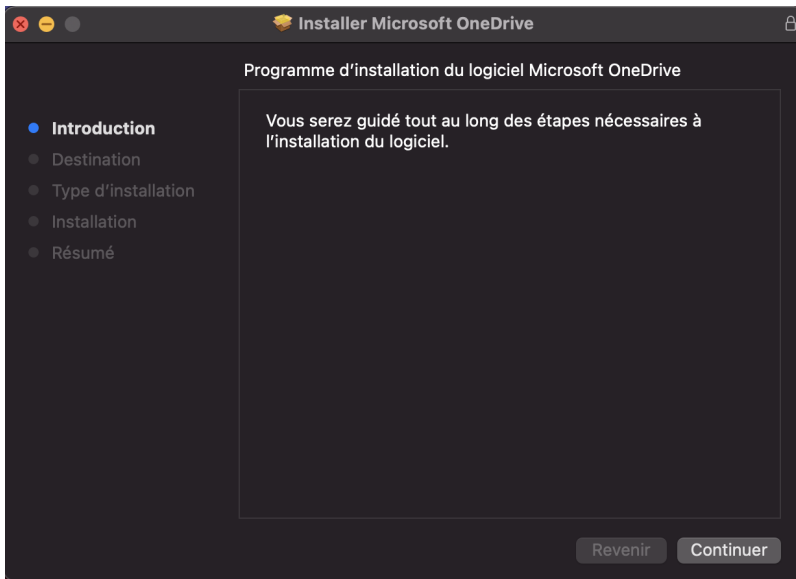
OneDrive can be installed from the Apple App Store:

<https://apps.apple.com/ch/app/onedrive/id823766827?l=fr&mt=12>

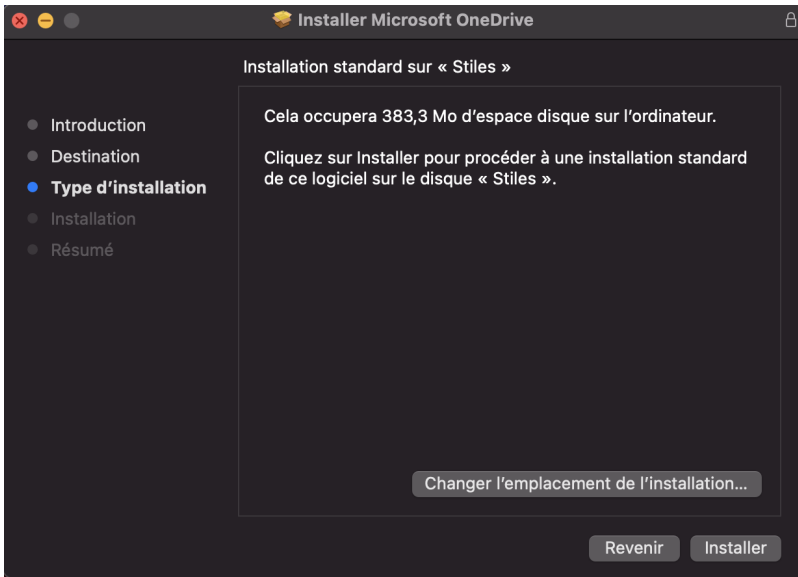


Method 2: Download

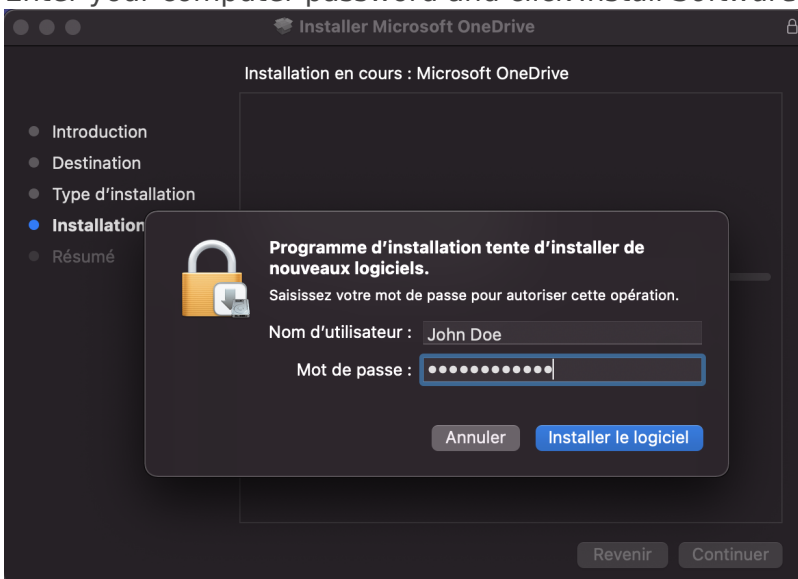
1. Download the installation file here: [OneDrive macOS](#)
2. Double-click on the installation file.
3. Click *Next*



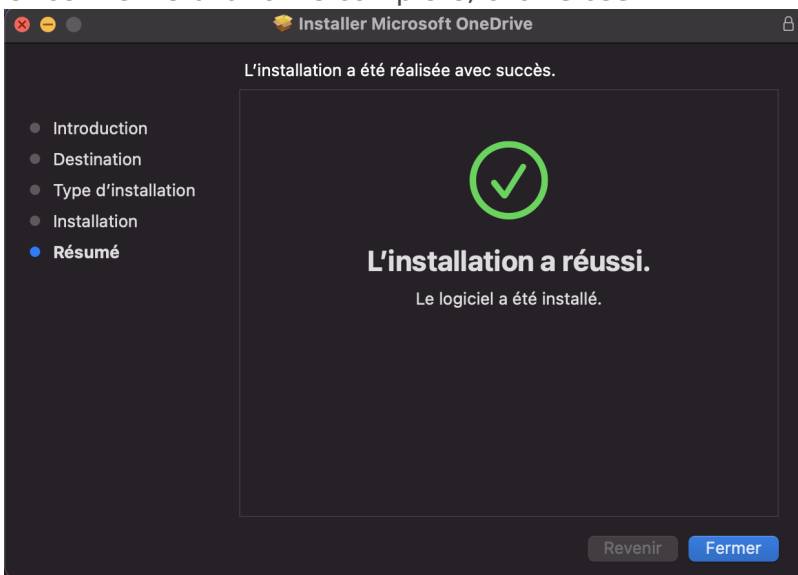
4. Click *Install*



5. Enter your computer password and click *Install Software*



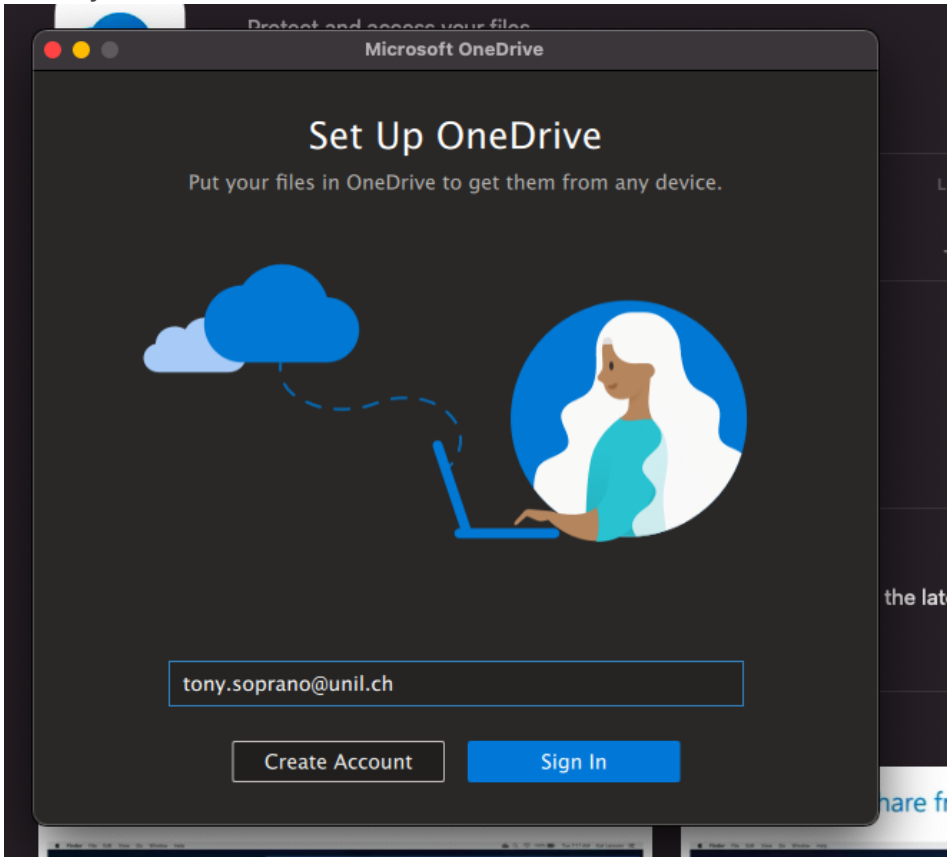
6. Once the installation is complete, click *Close*



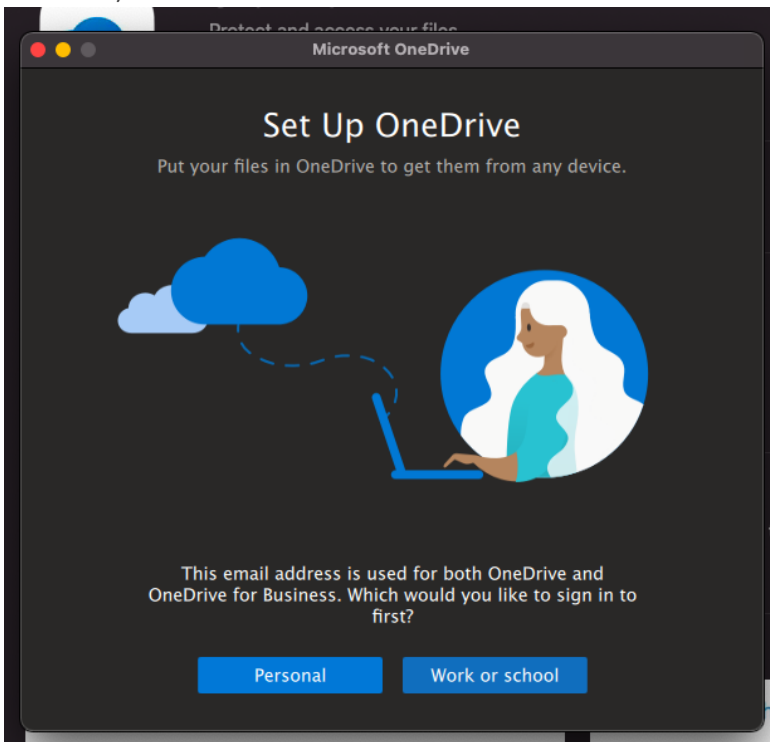
7. Launch the application from the *Applications* folder.

Configuration

1. Enter your UNIL email address



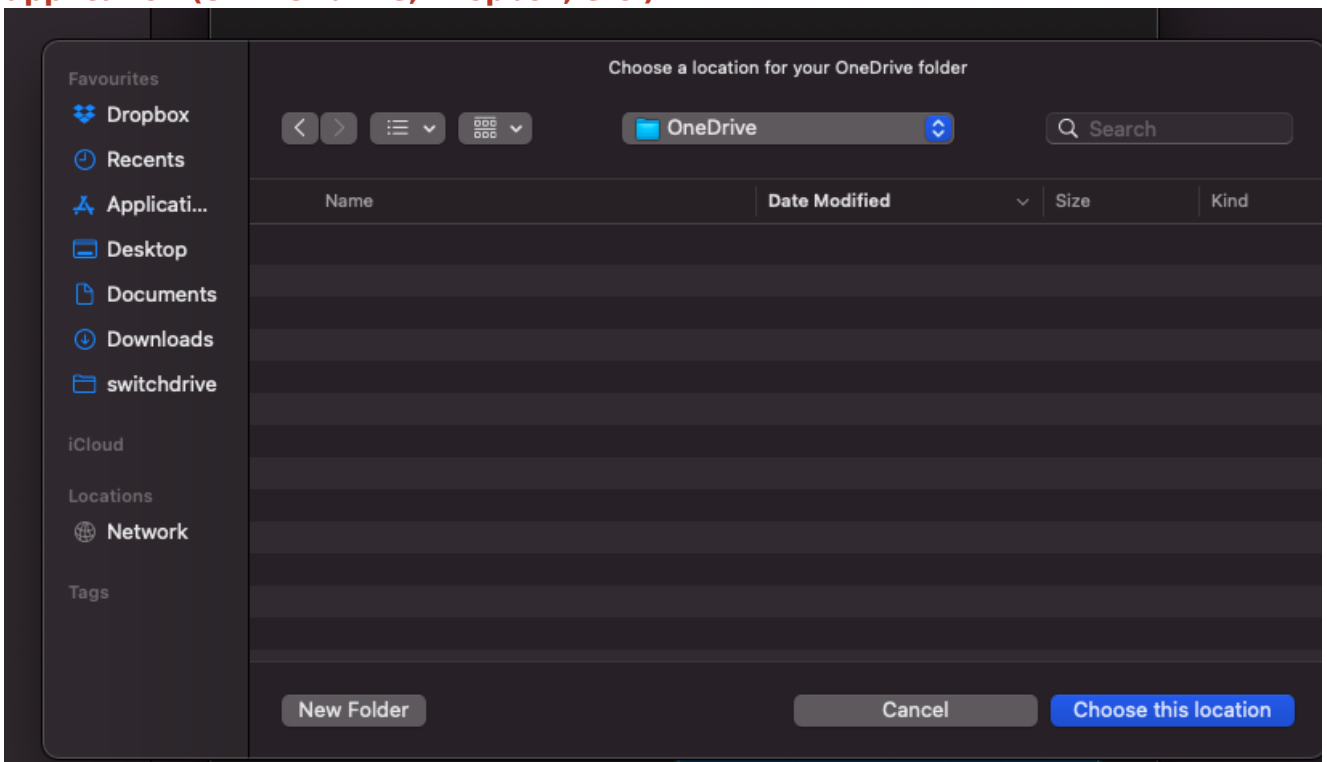
2. If asked, choose **Work or school**

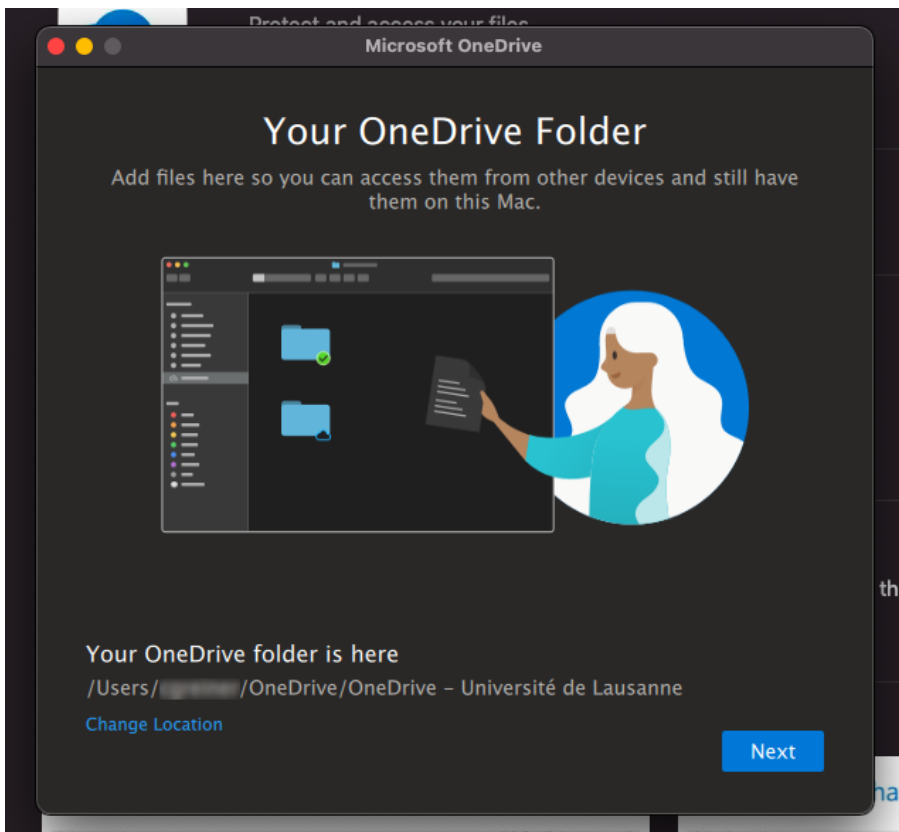


3. You will then be redirected to the UNIL login page. Enter your UNIL password and click **Sign In**.

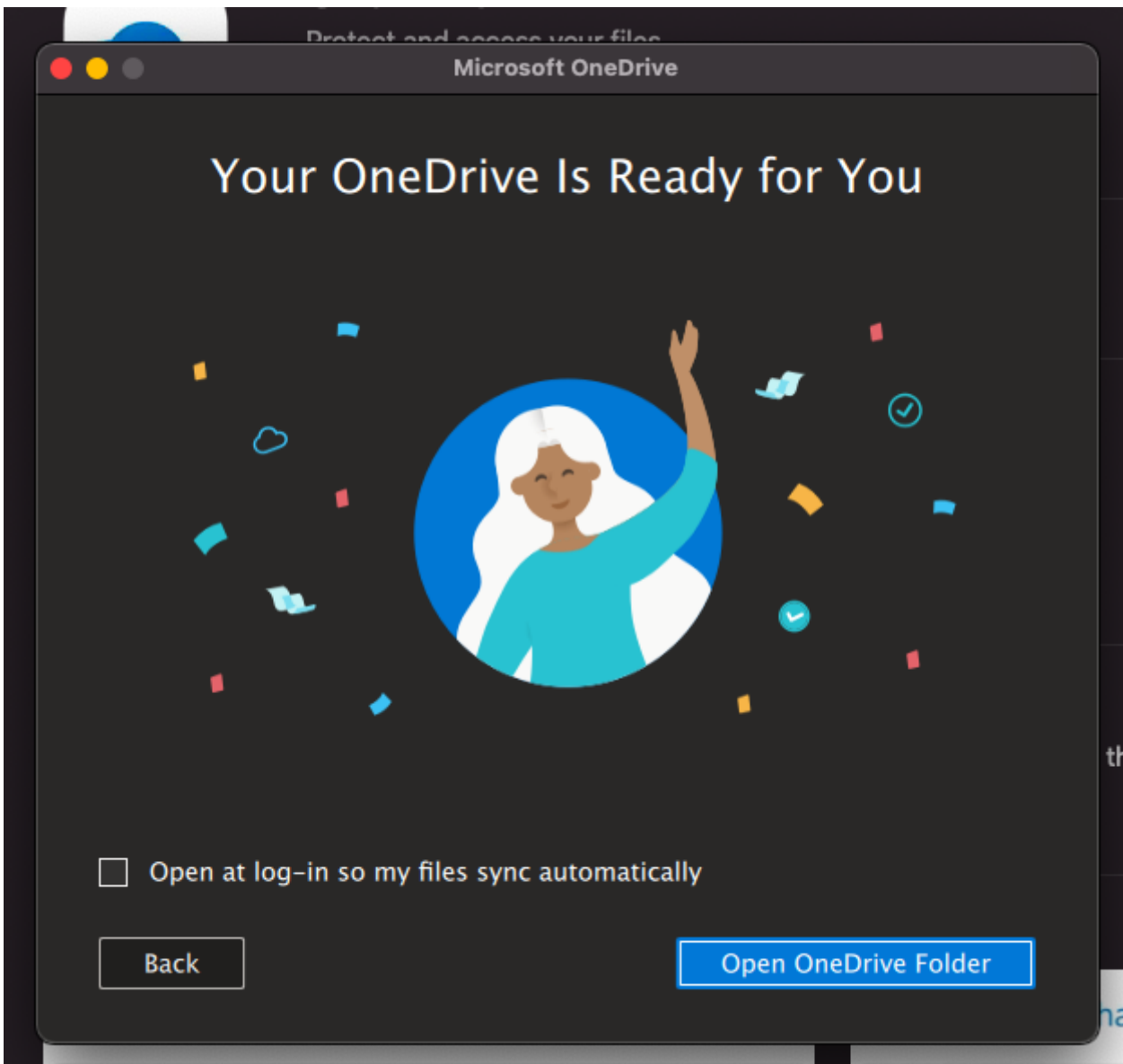


4. By default, OneDrive syncs a *OneDrive* folder in your user folder. You can modify it if you wish. **Never sync an entire user folder or a folder from another synchronization application (SWITCHdrive, Dropbox, etc.).**





5. Several explanation screens will appear. Skip them by clicking **Next**
6. The final screen allows you to open your synchronization folder and start depositing files. If you chose to sync the Desktop, Documents, and/or Pictures folders, the data loading will start immediately.



Linux

There is no official OneDrive client for Linux. It is recommended to use the [OneDrive web interface](#).

You can use an unofficial command-line client for synchronization. For more information, read this <https://askubuntu.com/questions/804301/how-to-sync-onedrive-business-office-365-on-linux>, and the link to the project can be found here <https://github.com/abraunegg/onedrive/blob/master/docs/INSTALL.md>

Some Linux distributions seem to offer OneDrive through their package manager, but this version is often not up-to-date. It is advisable to follow the instructions in the GitHub

repository below!

Ubuntu 20.04

The simplest solution seems to be Insync, but it is a paid service!

Add the OneDrive repository to your APT sources:

```
sudo vim /etc/apt/sources.list
```

Add the following line at the end of the file:

```
deb https://download.opensuse.org/repositories/home:/npreining:/debian-ubuntu-  
onedrive/xUbuntu_20.04/ ./
```

Close Vim (if you don't know how to close Vim, switch to macOS or Windows :))

Download the key for the repo and add it:

```
wget https://download.opensuse.org/repositories/home:/npreining:/debian-ubuntu-  
onedrive/xUbuntu_20.04/Release.key  
sudo apt-key add ./Release.key
```

Update APT and install the OneDrive client:

```
sudo apt update  
sudo apt install onedrive
```

Launch the client to configure it:

```
onedrive
```

This will give you:

```
Configuring Global Azure AD Endpoints  
Authorize this app visiting:  
  
https://login.microsoftonline.com/common/oauth2/v2.0/authorize?client_id=xxxxxxxx-xxxx-xxxx-  
xxxx-  
xxxxxxxxxxxx&scope=Files.ReadWrite%20Files.ReadWrite.all%20Sites.Read.All%20Sites.ReadWrite.Al  
l%20offline_access&response_type=code&redirect_uri=https://login.microsoftonline.com/common/oa
```

```
uth2/nativeclient
```

```
Enter the response uri
```

Click on the URL starting with <http://login.microsoftonline.com>. This will open your browser (or copy/paste it if clicking doesn't work) and log you into your Microsoft M365 account, leading you to a blank page. Copy/paste the URL of this blank page into the terminal and press Enter:

```
bash
```

```
Enter the response uri:
```

```
https://login.microsoftonline.com/common/oauth2/nativeclient?code=[.....]
```

```
The application has been successfully authorized; however, no additional command switches were provided.
```

```
Please use --help for further assistance regarding running this application.
```

Start syncing with the following command (the `--verbose` switch can be omitted), and your OneDrive files will be synchronized to the `~/OneDrive` directory:

```
bash
```

```
onedrive --synchronize --verbose
```

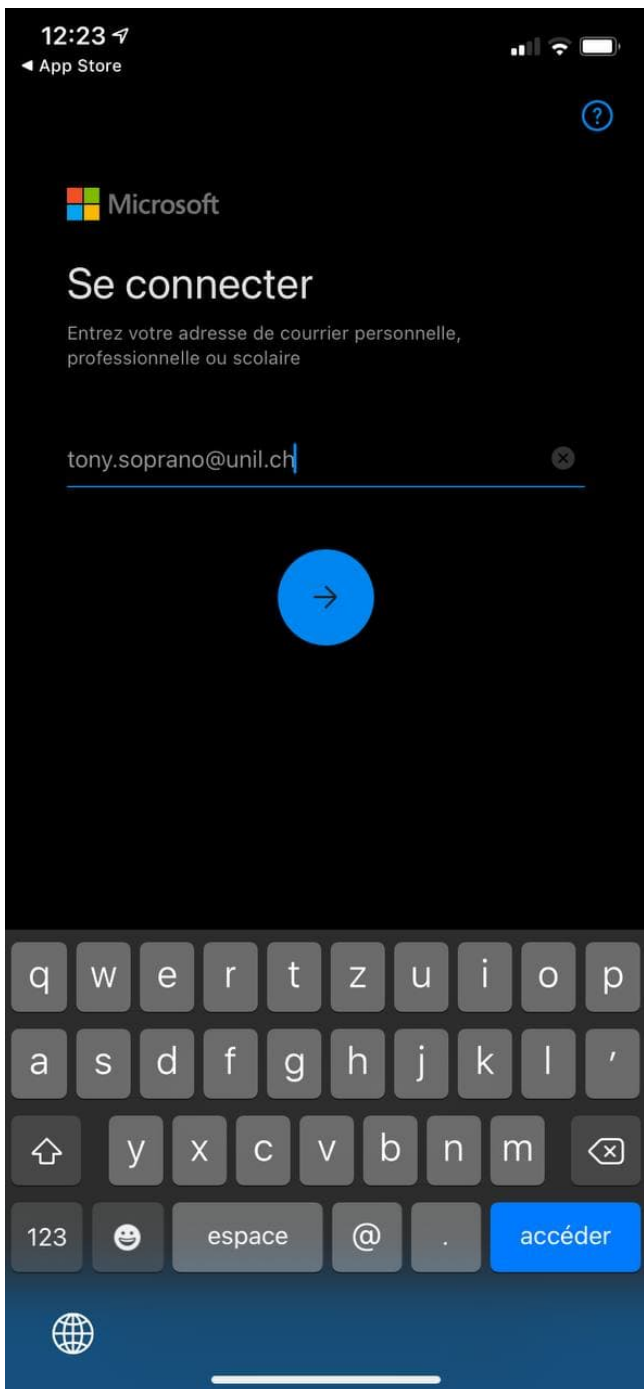
There is a graphical interface based on this OneDrive version called OneDriveGUI:

<https://github.com/bpozdena/OneDriveGUI>

Mobile Phone and Tablet

iOS and iPadOS

1. Go to the [App Store](#) and install the **OneDrive** application.
2. Enter your UNIL email address.



3. You will be redirected to the UNIL login screen. Enter your UNIL credentials (email and password) and click *Sign In*

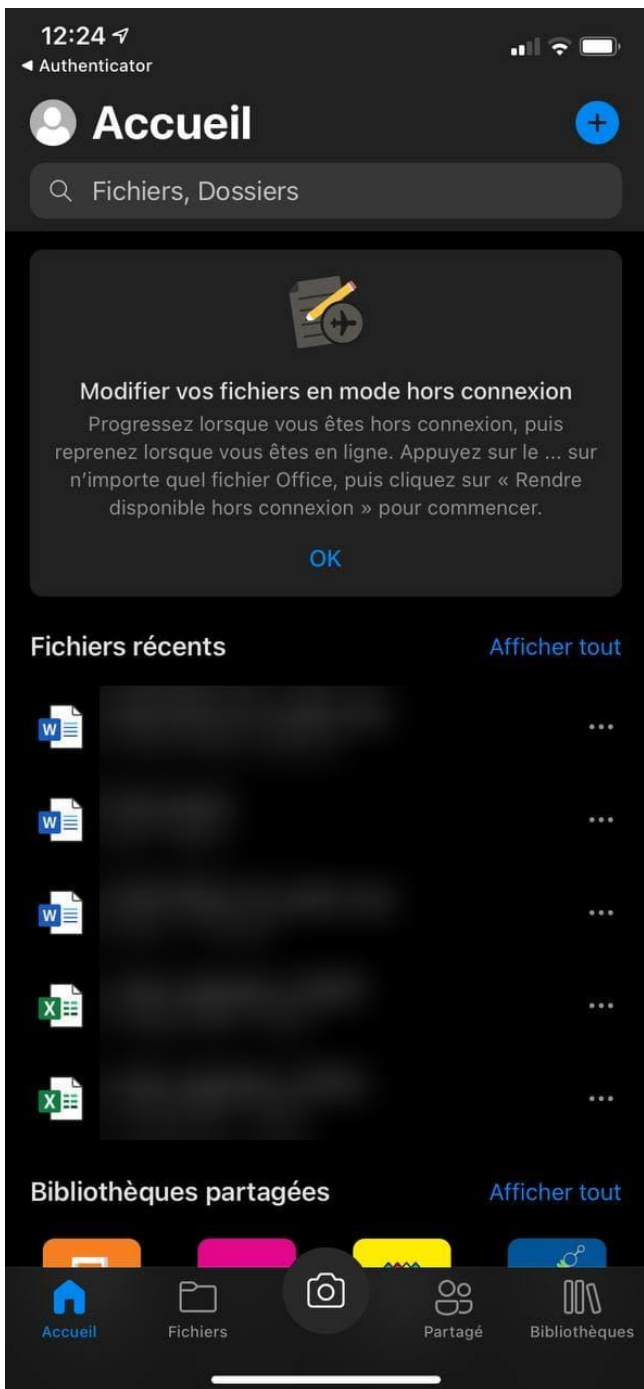


UNIL | Université de Lausanne



Connexion

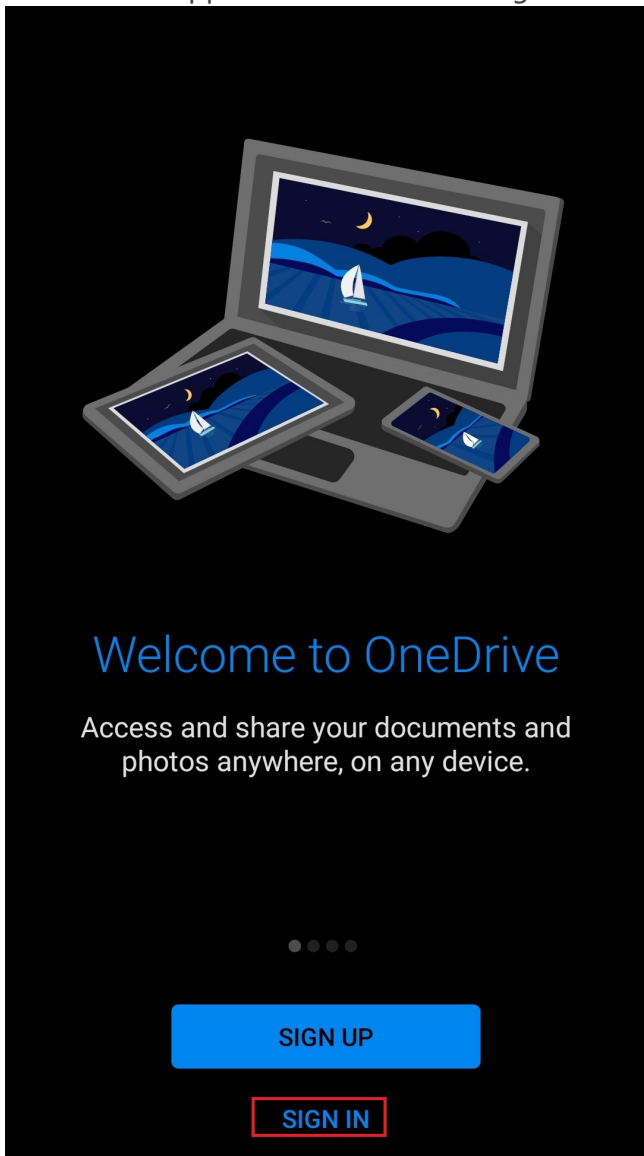
4. You will then have access to your OneDrive



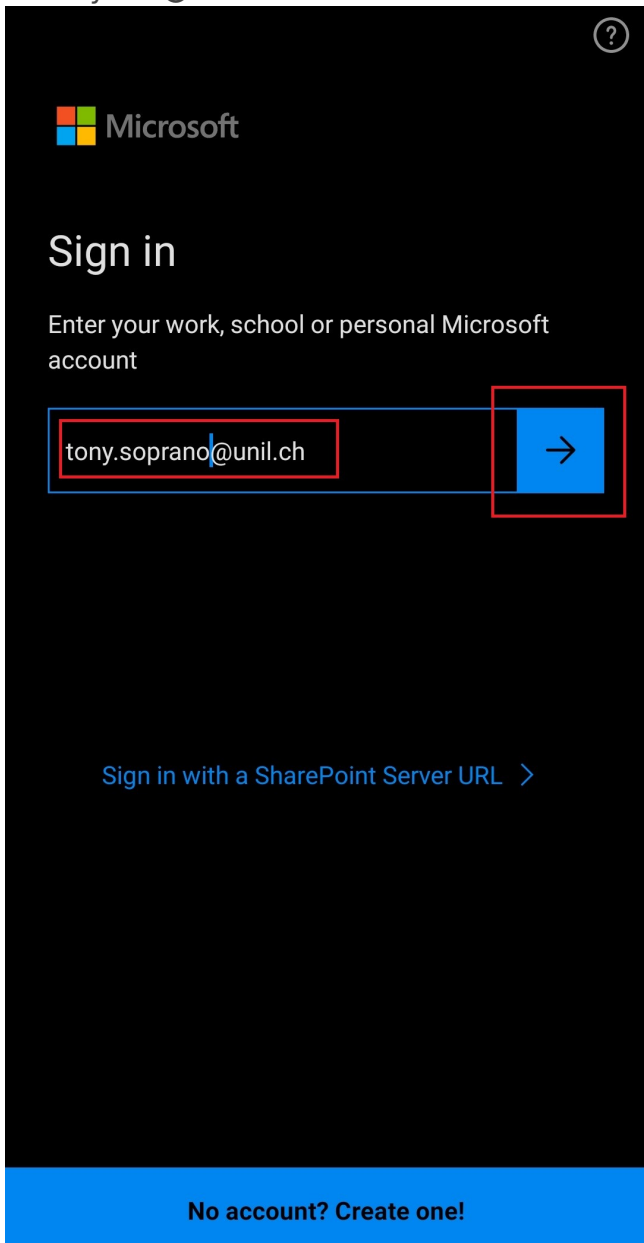
Android

1. Go to the [Google Play Store](https://play.google.com/store/apps/details?id=com.microsoft.office.onedrive) and install the **Microsoft OneDrive** application.

2. Launch the application and select *Sign in*



3. Enter your @**unil.ch** email address and continue



The image shows a Microsoft sign-in screen with a black background. At the top left is the Microsoft logo. Below it, the text "Sign in" is displayed. Underneath, it says "Enter your work, school or personal Microsoft account". A text input field contains the email address "tony.soprano@unil.ch" with a blue cursor at the end. To the right of the input field is a blue button with a white right-pointing arrow. Below the input field and button, there is a link that says "Sign in with a SharePoint Server URL >". At the bottom of the screen, there is a blue bar with the text "No account? Create one!". A small question mark icon is in the top right corner of the screen.

Microsoft

Sign in

Enter your work, school or personal Microsoft account

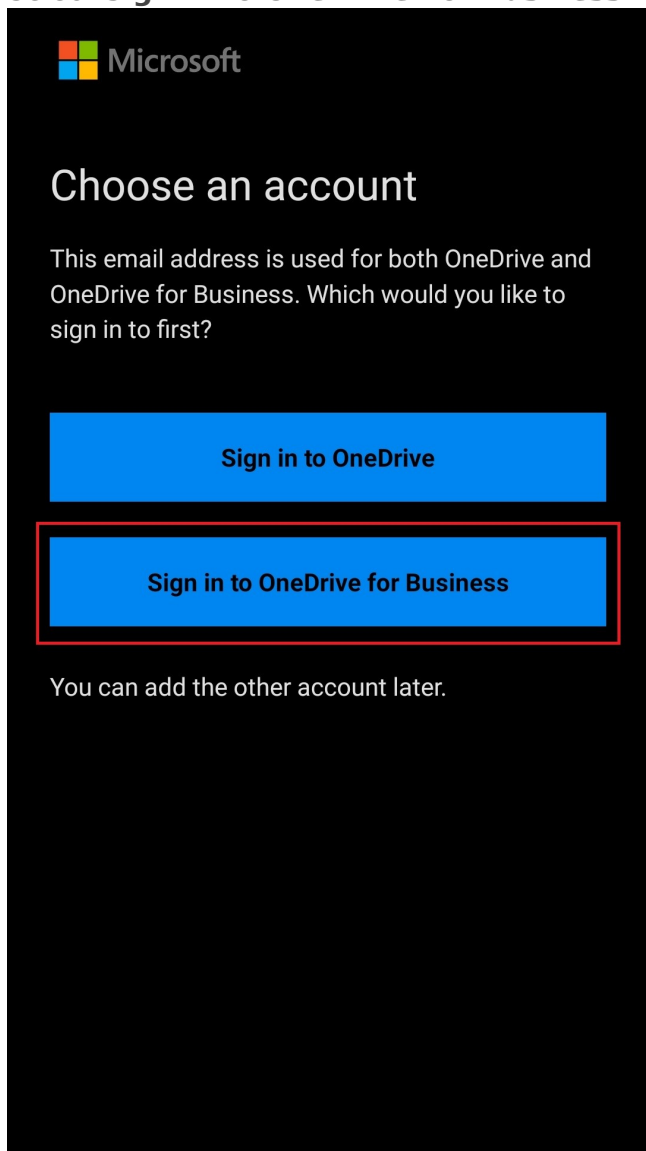
tony.soprano@unil.ch

→

[Sign in with a SharePoint Server URL >](#)

No account? Create one!

4. Select **Sign in to OneDrive For Business** if prompted



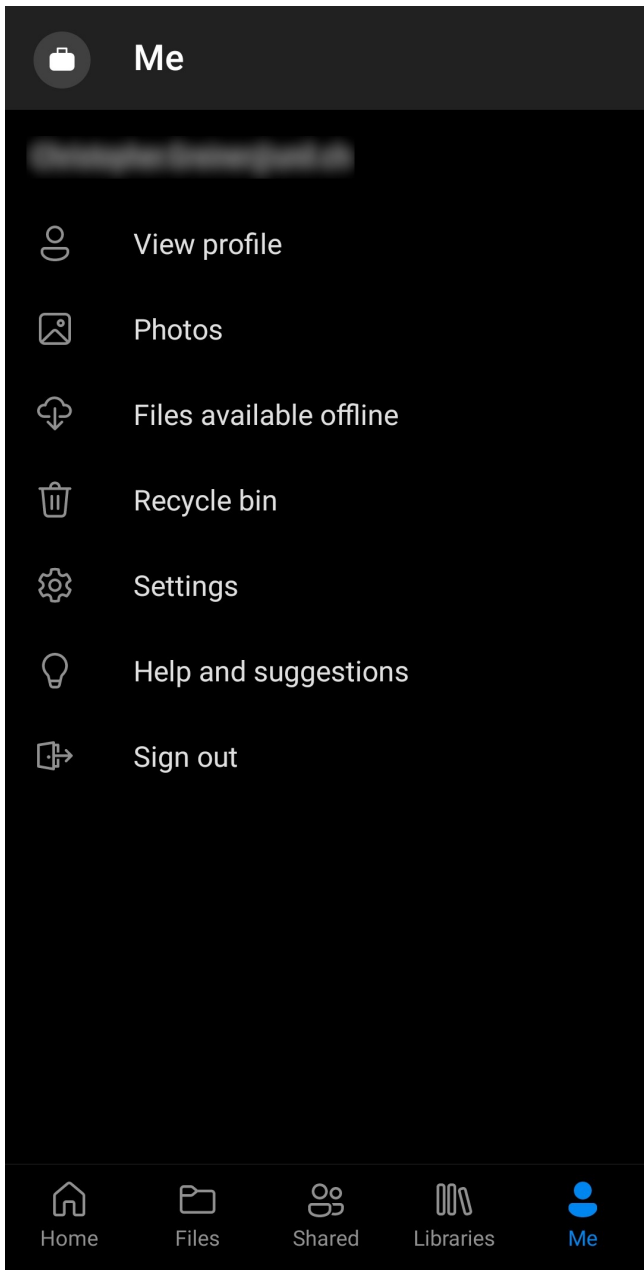
5. Enter your @**unil.ch** email address and your UNIL password, then click **Sign In**



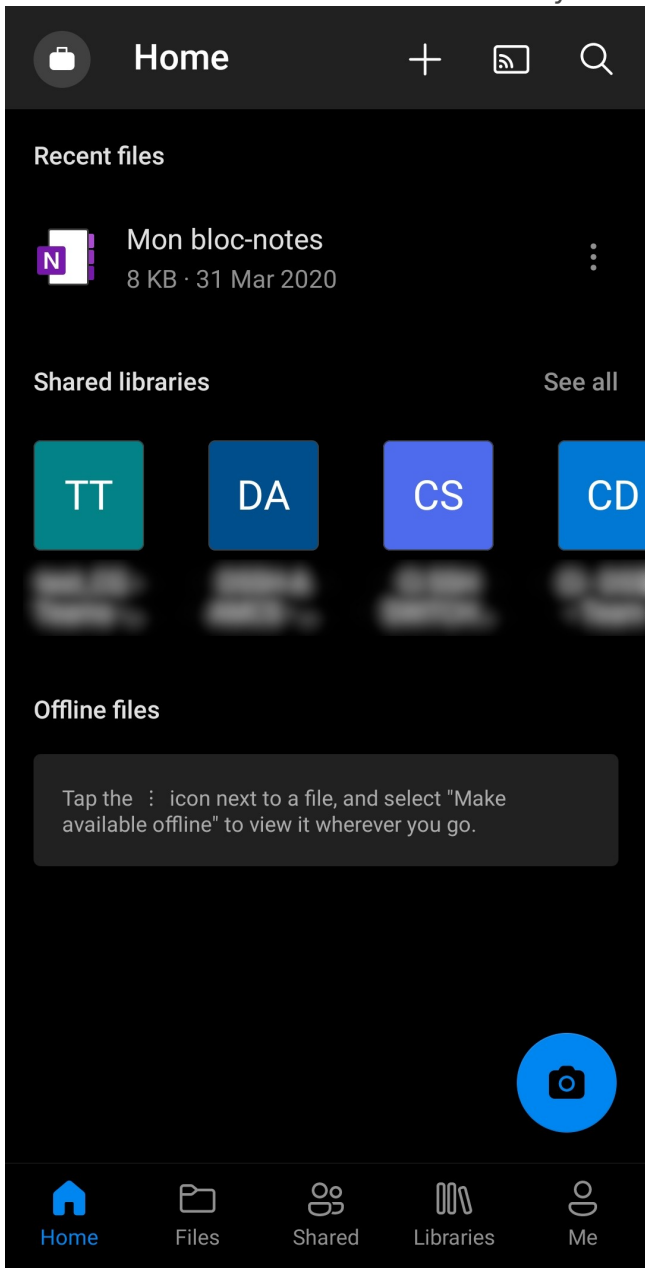
UNIL | Université de Lausanne



6. The final screen after installation



7. Click on "Home" to see an overview of your account



Révision #7

Créé 6 décembre 2023 10:06:37 par Chr Gr

Mis à jour 4 juillet 2024 07:50:29 par Chr Gr